

Injury attendances to Fairfield General Hospital Emergency Department

October 2010 to September 2011

This report summarises recorded injury attendances to Fairfield General Emergency Department (ED) between October 2010 and September 2011.

Between October 2010 and September 2011 there were 24,379 injury attendances to Fairfield General Hospital ED. Males accounted for just over half (53%) of all attendances. The month with the highest injury attendances was July (n=2,393) with February (n=1,694) having the lowest (**Figure 1**). Seven in ten (70%) of injury attendances were recorded as other injury. Of the specified injury groups, falls (16%) accounted for the highest proportion followed by road traffic collisions (RTCs) (5%) and assault (4%) (**Table 1**).

For all injury attendances, the highest proportions were for persons aged 5 to 19 (25%) and 20 to 34 years (22%) (**Figure 2**). Almost six in ten (57%) of fall attendees were aged 65 or over. Almost half (46%) of assault attendees were aged 20 to 34 years. Nearly two-fifths (37%) of RTC attendees and over two-fifths (42%) of deliberate self-harm (DSH) attendees were aged 20 to 34 years (**Figure 3**).

Table 2 shows the location of the incident of injury attendances. Over two-fifths (41%) of injuries occurred in the home. Over one in six (17%) of injuries occurred in a public place with smaller proportions occurring at work (6%) or at an educational establishment (5%). Nearly half (47%) of

assaults occurred in a public place. Nearly three-quarters (74%) of DSH injuries occurred at home. Over half (55%) of falls occurred in the home.

Table 3 shows the ethnicity of attendees to Fairfield General Hospital ED. Almost nine in ten (87%) were white and 5% were Pakistani.

The disposal of a patient can give an indication of the severity of the injuries sustained. Most (63%) attendees were discharged, over a quarter (26%) had a referral/follow-up and 9% were admitted (**Table 4**). Over three-quarters (78%) of RTC attendees were discharged. Over a quarter (27%) of fall attendees were admitted and nearly half (48%) of burns and scalds attendees had a referral/follow-up (**Table 5**).

Table 6 shows the arrival methods of injury attendances at Fairfield General Hospital ED. Two-thirds (66%) arrived by private transport while over a fifth (22%) arrived by ambulance.

Table 7 shows assault attendances to Fairfield General ED. Over seven in ten (72%) assault attendees were male and nearly half (46%) were aged 20 to 34 years. Over a half (52%) of assault attendances arrived at the ED by ambulance, and over a third (35%) of assault attendances occurred on weekend nights.

Figure 1: Fairfield General Hospital ED: Total injury attendances by gender and month, October 2010 to September 2011

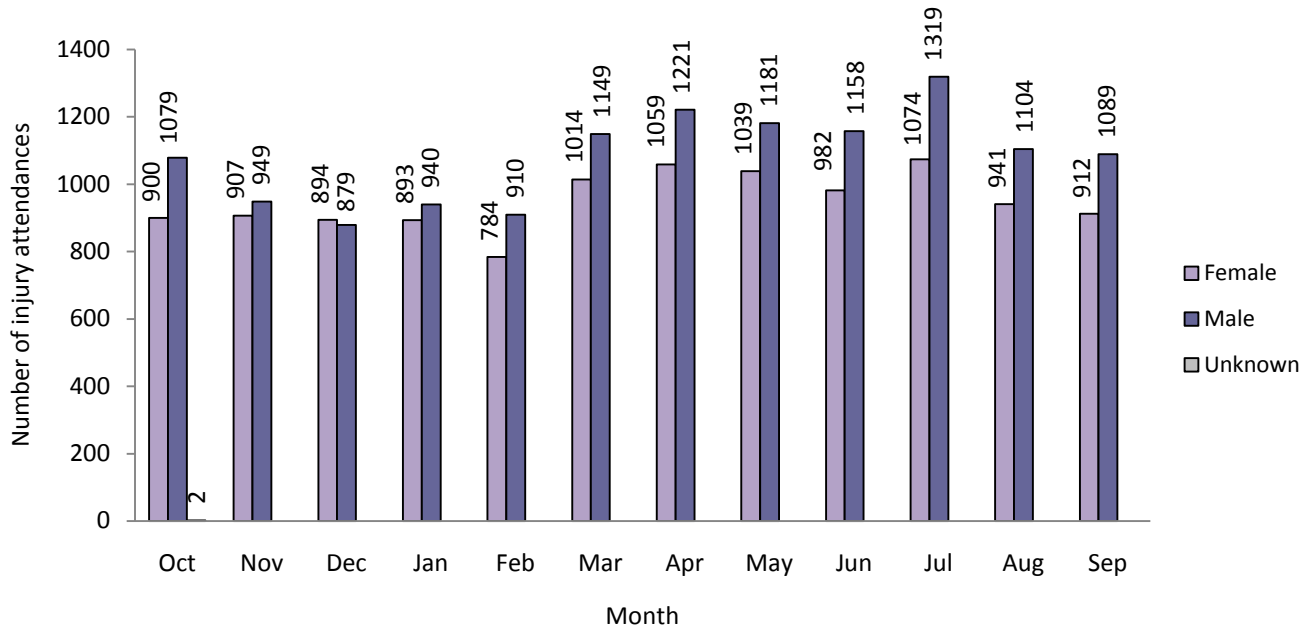


Table 1: Fairfield General Hospital ED: Total injury attendances by injury group and month, October 2010 to September 2011

Injury group	Oct	Nov	Dec	Jan	Feb	Mar	Apr	May	Jun	Jul	Aug	Sep	Total	%
Other injury	1402	1239	1145	1298	1222	1613	1615	1623	1527	1736	1400	1300	17120	70
Fall	308	311	369	313	250	317	360	309	351	358	322	383	3951	16
RTC	101	131	103	84	95	89	115	111	90	97	107	121	1244	5
Assault	85	79	76	65	58	50	85	96	79	97	87	83	940	4
Burns and scalds	36	58	37	43	39	41	57	36	41	55	55	56	554	2
Bites and stings	29	24	20	18	11	33	31	26	31	27	52	28	330	1
DSH	20	14	23	12	19	20	17	19	21	23	22	30	240	1
Total	1981	1856	1773	1833	1694	2163	2280	2220	2140	2393	2045	2001	24379	100

Figure 2: Fairfield General Hospital ED: Total injury attendances by age group and month, October 2010 to September 2011

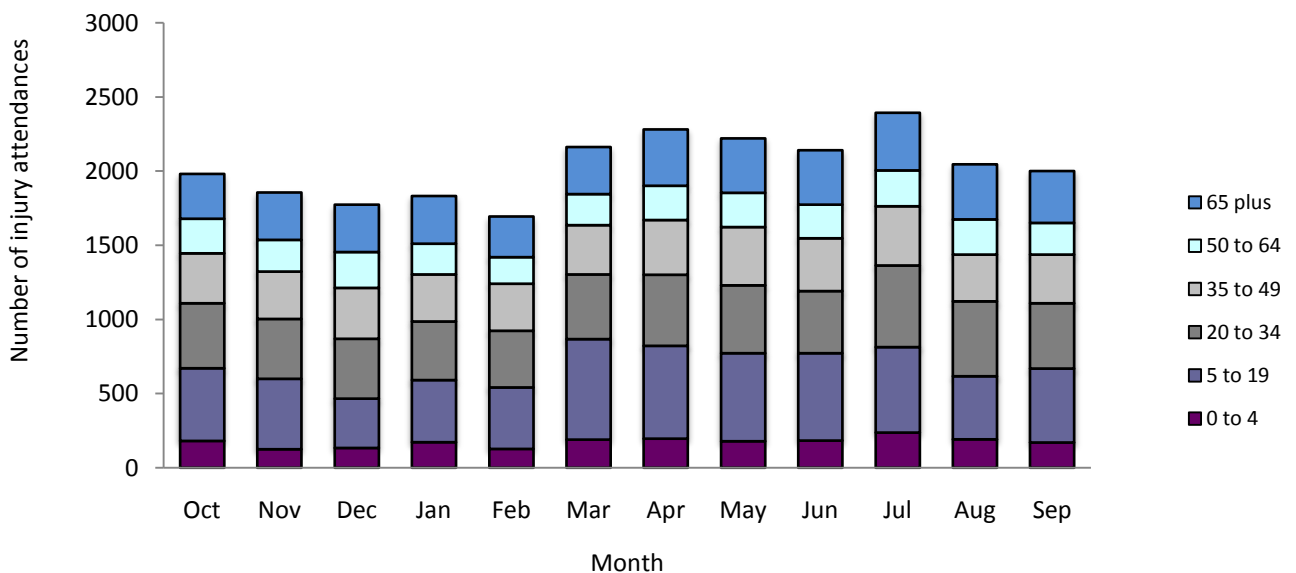


Figure 3: Fairfield General Hospital ED: Total injury attendances by age group and injury group, October 2010 to September 2011 (excluding other injury)

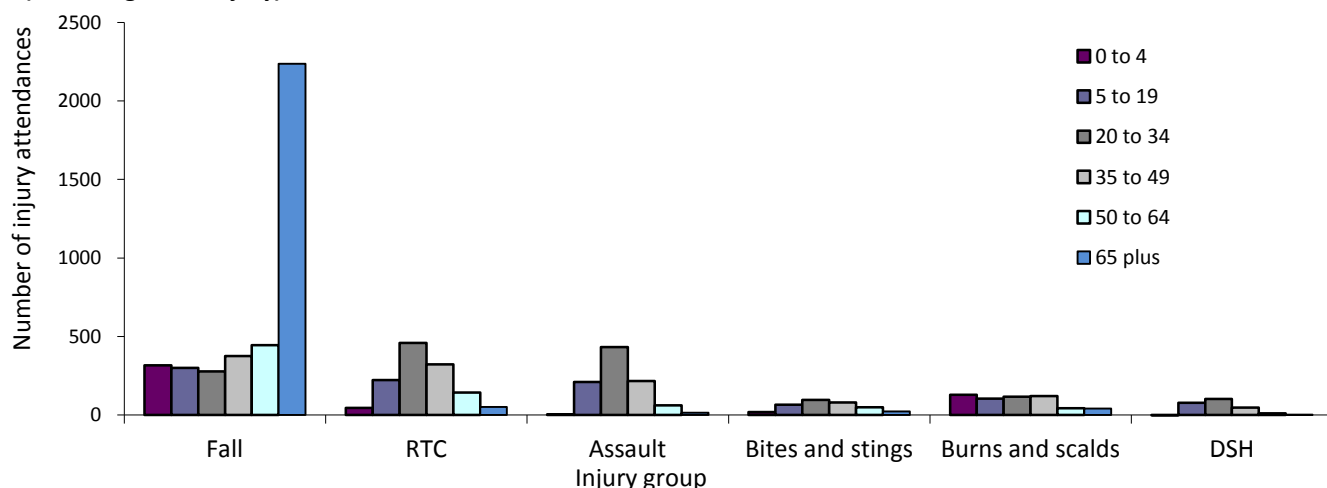


Table 2: Fairfield General Hospital ED: Total injury attendances by location of incident and injury group, October 2010 to September 2011¹²

Location	Assault		Bites and stings		Burns and scalds		DSH		Fall		Other injury		RTC		Total	
	n	%	n	%	n	%	n	%	n	%	n	%	n	%	n	%
Home	241	26	137	42	263	47	177	74	2173	55	6982	41	19	2	9992	41
Other	193	21	37	11	49	9	25	10	262	7	3152	18	1182	95	4900	20
Public place	444	47	94	28	***	3	***	8	841	21	2825	17	11	1	4250	17
Unknown	18	2	29	9	158	29	16	7	552	14	1721	10	24	2	2518	10
Work	36	4	33	10	68	12	0	0	69	2	1314	8	8	1	1528	6
Educational establishment	8	1	0	0	***	0	***	1	54	1	1126	7	0	0	1191	5
Total	940	100	330	100	554	100	240	100	3951	100	17120	100	1244	100	24379	100

Table 3: Fairfield General Hospital ED: Total injury attendances by ethnicity and month, October 2010 to September 2011³

Ethnicity	Oct	Nov	Dec	Jan	Feb	Mar	Apr	May	Jun	Jul	Aug	Sep	Total	%
White	1720	1615	1527	1579	1468	1855	1998	1899	1865	2079	1797	1702	21104	87
Pakistani	95	85	93	100	85	102	117	132	109	108	94	125	1245	5
Not known	80	69	59	60	64	92	71	86	79	100	72	72	904	4
Other ethnic group	34	34	49	42	30	41	38	47	30	52	37	45	479	2
Other Asian background	21	20	19	19	12	24	21	20	19	14	11	21	221	1
Mixed	14	9	8	6	11	14	11	9	14	20	13	13	142	1
Black	8	10	13	9	13	14	5	13	7	15	13	10	130	1
Bangladeshi	***	5	***	***	***	7	***	10	6	***	***	8	65	0
Indian	***	6	***	10	5	9	7	***	8	***	***	***	60	0
Chinese	***	***	***	***	***	5	***	***	***	***	***	***	29	0
Total	1981	1856	1773	1833	1694	2163	2280	2220	2140	2393	2045	2001	24379	100

Table 4: Fairfield General Hospital ED: Total injury attendances by method of disposal and month, October 2010 to September 2011⁴

Disposal	Oct	Nov	Dec	Jan	Feb	Mar	Apr	May	Jun	Jul	Aug	Sep	Total	%
Discharged	1210	1165	1079	1159	1057	1335	1432	1382	1396	1544	1291	1402	15452	63
Referral/follow-up	577	520	458	482	453	625	570	612	534	614	515	395	6355	26
Admitted	165	155	210	173	165	188	246	203	197	212	208	177	2299	9
Other	29	16	26	19	19	15	32	23	13	23	31	27	273	1
Total	1981	1856	1773	1833	1694	2163	2280	2220	2140	2393	2045	2001	24379	100

¹ Please note that all numbers less than five have been suppressed (***) in line with patient confidentiality and if there is only one number less than five in a category then two numbers will be suppressed at the next level.

² Percentages may not add up to a hundred due to rounding.

³ White = Irish, British, other white background; Mixed = white and black, white and Asian, mixed other; Other = any other ethnic group, any other Asian background; Black = African, Caribbean, other black.

⁴ Admitted=admitted to ED bed/became a lodged patient of the same health care provider; Discharged=discharged - did not require any follow-up treatment; Referred/follow-up =discharged - follow-up treatment to be provided by GP, referred to ED clinic, referred to fracture clinic, referred to other out-patient clinic, transferred to other health care provider, referred to other health care professional; Other=died in department, left department before being treated, left department having refused treatment, other.

Table 5: Fairfield General Hospital ED: Total injury attendances by method of disposal and injury group, October 2010 to September 2011

Disposal	Assault		Bites and stings		Burns and scalds		DSH		Fall		Other injury		RTC		Total	
	n	%	n	%	n	%	n	%	n	%	n	%	n	%	n	%
Admitted	101	11	***	3	***	6	41	17	1077	27	973	6	63	5	2299	9
Discharged	574	61	221	67	267	48	131	55	2063	52	11230	66	966	78	15452	63
Other	90	10	***	1	***	2	29	12	61	2	52	0	28	2	273	1
Referral/follow-up	175	19	95	29	244	44	39	16	750	19	4865	28	187	15	6355	26
Total	940	100	330	100	554	100	240	100	3951	100	17120	100	1244	100	24379	100

Table 6: Fairfield General Hospital ED: Total injury attendances by mode of arrival and month, October 2010 to September 2011

Arrival mode	Oct	Nov	Dec	Jan	Feb	Mar	Apr	May	Jun	Jul	Aug	Sep	Total	%
Private transport	1322	1214	1125	1170	1112	1504	1512	1483	1415	1575	1373	1322	16127	66
Ambulance	448	396	446	426	383	440	476	450	467	489	442	445	5308	22
Unknown	99	90	61	90	84	51	116	123	111	119	89	98	1131	5
Taxi	55	68	75	73	56	72	76	93	64	96	60	52	840	3
Public transport	18	42	30	27	25	42	47	30	36	45	31	30	403	2
Foot	22	21	20	24	19	32	39	24	25	39	28	28	321	1
Police	6	9	12	13	8	12	9	10	11	16	10	14	130	1
Work transport	***	9	***	***	***	***	***	***	***	9	***	7	78	0
Other	***	7	***	***	***	***	***	***	***	5	***	5	41	0
Total	1981	1856	1773	1833	1694	2163	2280	2220	2140	2393	2045	2001	24379	100

Table 7: Fairfield General Hospital ED: Total injury attendances by mode of arrival, October 2010 to September 2011*

Injury type	Assault attendees		All injuries % (n=24,379)
	n	%	%
Gender			
Female	262	28	47
Male	678	72	53
Mode of arrival			
Ambulance	489	52	22
Other	451	48	78
Age group			
0 - 4	5	0	9
5 - 19	210	22	25
20 - 34	432	46	22
35 - 49	216	23	17
50 - 64	62	7	11
65 plus	15	2	17
Day & time			
Weekend nights**	328	35	9
Weekend days	234	25	21
Weekdays	378	40	70

* Percentages may not add up to 100 due to rounding.

**8pm to 4am Friday night/Saturday morning, Saturday night/Sunday morning, Sunday night/Monday morning.

Author: Ian Warren, Published: January 2012

For further information contact: Centre for Public Health, Research Directorate, Liverpool John Moores University,
2nd Floor, Henry Cotton Building, 17-21 Webster Street, Liverpool, L3 2ET

Tel: 0151 231 4513 or Email: i.j.warren@ljmu.ac.uk Website: www.tiig.info (data requests should be made through the website)